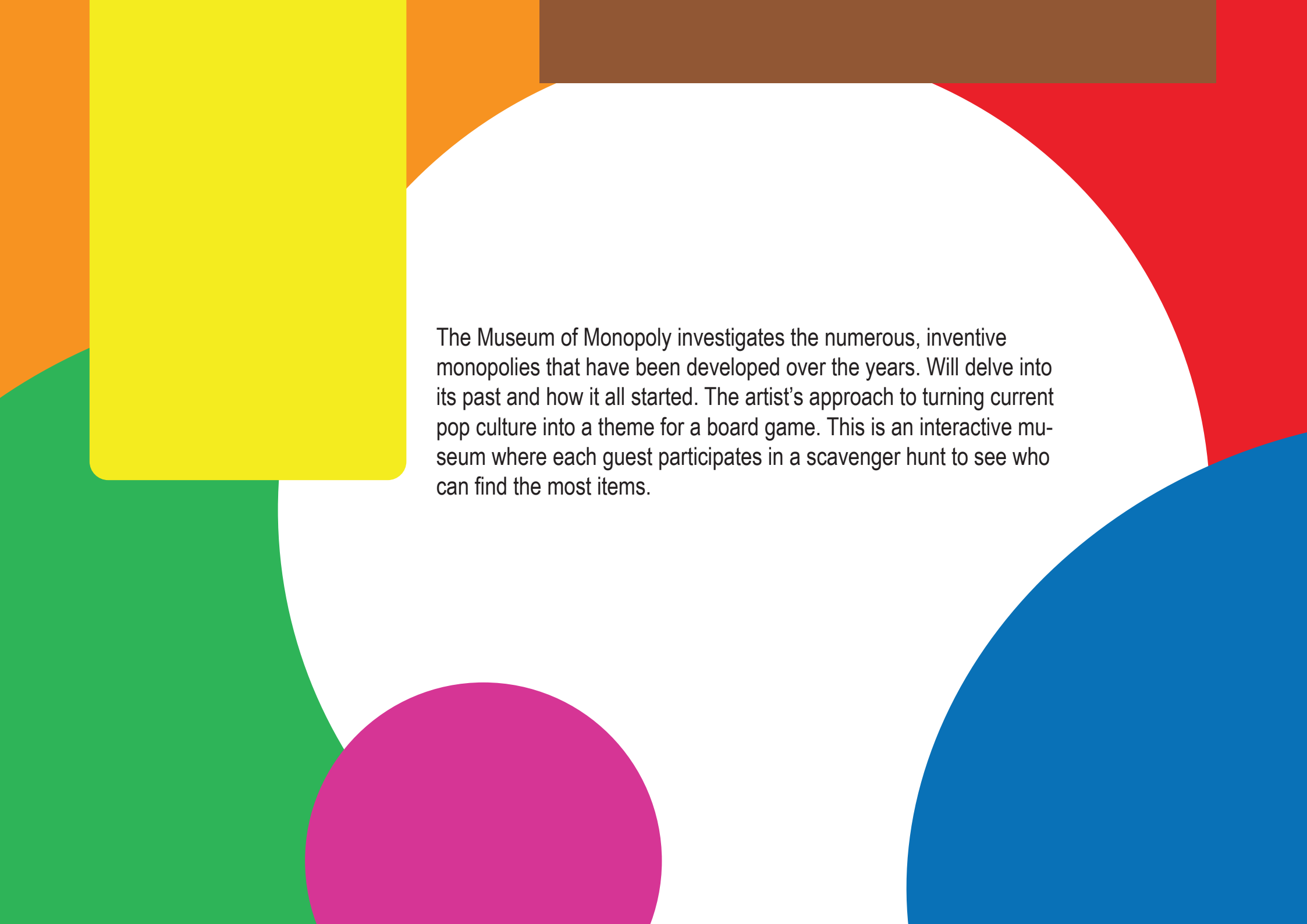
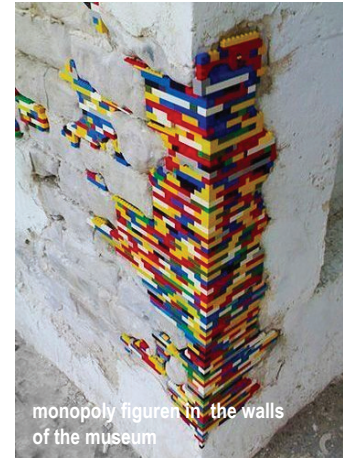
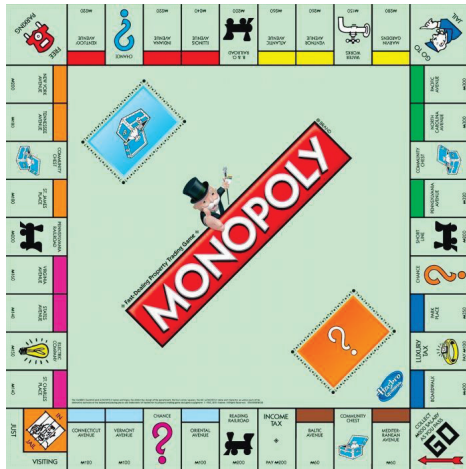




museum of monopoly



The Museum of Monopoly investigates the numerous, inventive monopolies that have been developed over the years. Will delve into its past and how it all started. The artist's approach to turning current pop culture into a theme for a board game. This is an interactive museum where each guest participates in a scavenger hunt to see who can find the most items.



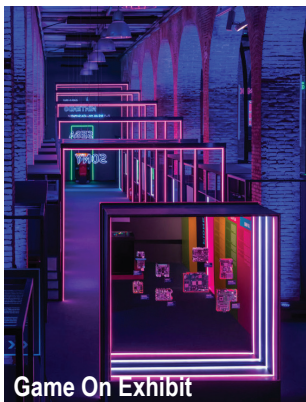
monopoly figure in the walls of the museum

Monopoly has distinctive characteristics that I'd like to keep and bring to the museum. The colors of the properties in Monopoly are light blue, dark blue, red, orange, pink, yellow, gray, and brown, which are a significant identity of Monopoly.

<p>TITLE DEEDS OLE KIRK CHRISTIAN HOUSE DENMARK</p> <p>RENT #M35</p> <p>With 1 House #M175 With 2 Houses #M500 With 3 Houses #M1100 With 4 Houses #M1300 With HOTEL #M1500</p> <p>Mortgage Value #M175 Houses cost #M200 each Hotels, #M200 each plus 4 Houses</p> <p><small>If a player owns all the sites of one colour group, they are declared an unopposed site in that group. If a player owns all the sites of one colour group, they are declared an unopposed site in that group. © 1985, Hasbro, Inc.</small></p>	<p>TITLE DEEDS LEGO HANS OFFICE DENMARK</p> <p>RENT #M56</p> <p>With 1 House #M130 With 2 Houses #M300 With 3 Houses #M900 With 4 Houses #M1100 With HOTEL #M1375</p> <p>Mortgage Value #M150 Houses cost #M200 each Hotels, #M200 each plus 4 Houses</p> <p><small>If a player owns all the sites of one colour group, they are declared an unopposed site in that group. © 1985, Hasbro, Inc.</small></p>	<p>TITLE DEEDS LEGOLAND DENMARK</p> <p>RENT #M14</p> <p>With 1 House #M70 With 2 Houses #M200 With 3 Houses #M550 With 4 Houses #M750 With HOTEL #M950</p> <p>Mortgage Value #M90 Houses cost #M100 each Hotels, #M100 each plus 4 Houses</p> <p><small>If a player owns all the sites of one colour group, they are declared an unopposed site in that group. © 1985, Hasbro, Inc.</small></p>	<p>TITLE DEEDS LEGOLAND ENGLAND</p> <p>RENT #M8</p> <p>With 1 House #M40 With 2 Houses #M100 With 3 Houses #M300 With 4 Houses #M450 With HOTEL #M600</p> <p>Mortgage Value #M60 Houses cost #M50 each Hotels, #M50 each plus 4 Houses</p> <p><small>If a player owns all the sites of one colour group, they are declared an unopposed site in that group. © 1985, Hasbro, Inc.</small></p>
<p>TITLE DEEDS LEGOLAND GERMANY</p> <p>RENT #M12</p> <p>With 1 House #M60 With 2 Houses #M180 With 3 Houses #M500 With 4 Houses #M700 With HOTEL #M900</p> <p>Mortgage Value #M80 Houses cost #M100 each Hotels, #M100 each plus 4 Houses</p> <p><small>If a player owns all the sites of one colour group, they are declared an unopposed site in that group. © 1985, Hasbro, Inc.</small></p>	<p>TITLE DEEDS LEGO DISCOVERY CENTRES</p> <p>RENT #M22</p> <p>With 1 House #M110 With 2 Houses #M330 With 3 Houses #M900 With 4 Houses #M975 With HOTEL #M1150</p> <p>Mortgage Value #M130 Houses cost #M150 each Hotels, #M150 each plus 4 Houses</p> <p><small>If a player owns all the sites of one colour group, they are declared an unopposed site in that group. © 1985, Hasbro, Inc.</small></p>	<p>TITLE DEEDS LEGO FACTORY STORES</p> <p>RENT #M2</p> <p>With 1 House #M10 With 2 Houses #M30 With 3 Houses #M90 With 4 Houses #M160 With HOTEL #M250</p> <p>Mortgage Value #M30 Houses cost #M50 each Hotels, #M50 each plus 4 Houses</p> <p><small>If a player owns all the sites of one colour group, they are declared an unopposed site in that group. © 1985, Hasbro, Inc.</small></p>	<p>TITLE DEEDS LEGO FACTORY MEXICO</p> <p>RENT #M18</p> <p>With 1 House #M90 With 2 Houses #M250 With 3 Houses #M700 With 4 Houses #M875 With HOTEL #M1050</p> <p>Mortgage Value #M110 Houses cost #M150 each Hotels, #M150 each plus 4 Houses</p> <p><small>If a player owns all the sites of one colour group, they are declared an unopposed site in that group. © 1985, Hasbro, Inc.</small></p>



Super Nintendo World



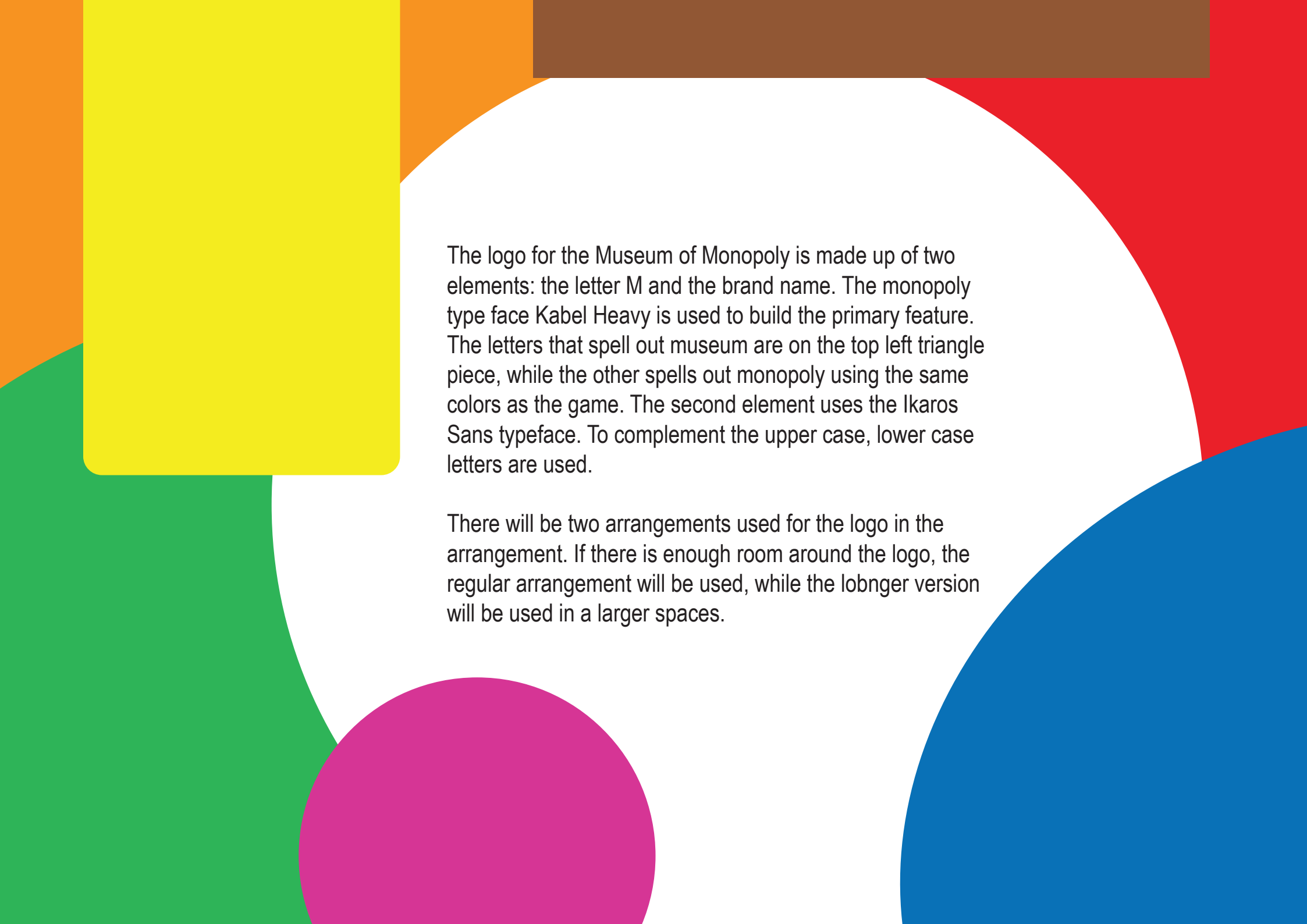
Game On Exhibit



Game On Exhibit



History of Fashion: From Avant - grade to Gost



The logo for the Museum of Monopoly is made up of two elements: the letter M and the brand name. The monopoly type face Kabel Heavy is used to build the primary feature. The letters that spell out museum are on the top left triangle piece, while the other spells out monopoly using the same colors as the game. The second element uses the Ikaros Sans typeface. To complement the upper case, lower case letters are used.

There will be two arrangements used for the logo in the arrangement. If there is enough room around the logo, the regular arrangement will be used, while the longer version will be used in a larger spaces.



museum of monopoly

Regular Arrangement



museum of
monopoly

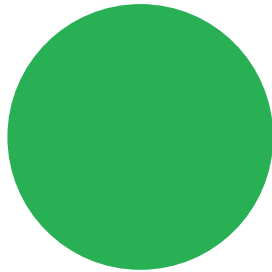
Secondary Arrangement

a A

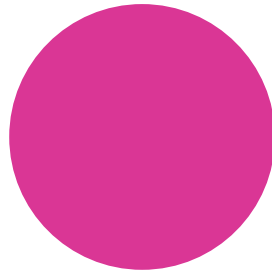
Arial Narrow

d A

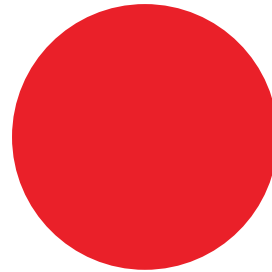
Ikaros Sans



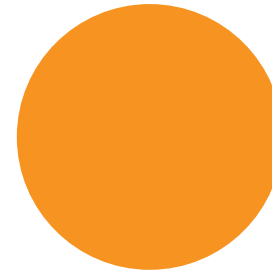
20ae53
C: 79 M: 2
Y: 93 K: 0



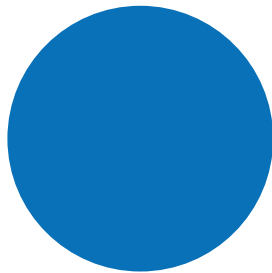
da3994
C: 9 M: 91
Y: 0 K: 0



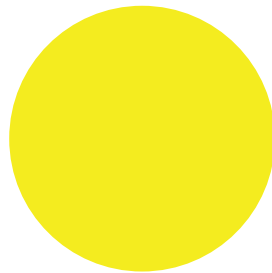
e82229
C: 2 M: 99
Y: 95 K: 0



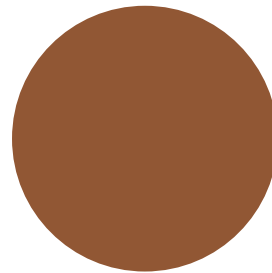
f79321
C: 0 M: 50
Y: 98 K: 0



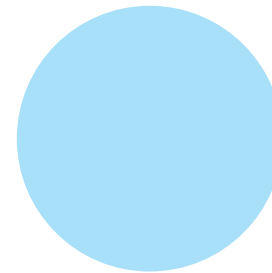
0071b6
C: 89 M: 52
Y: 2 K: 0



f6eb1c
C: 6 M: 0
Y: 95 K: 0

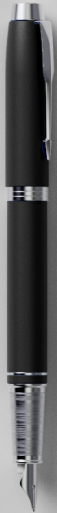
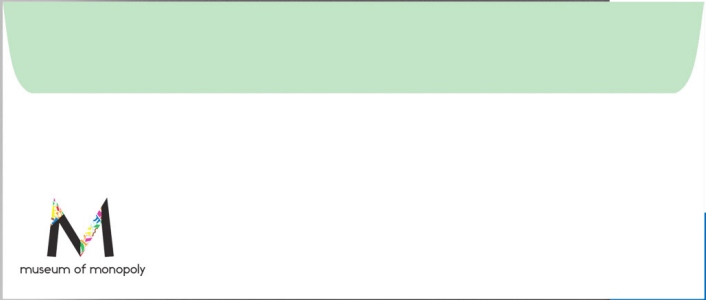
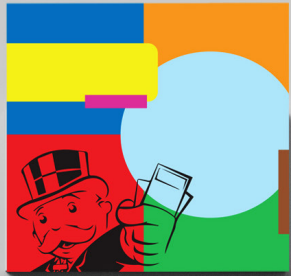


925734
C: 32 M: 67
Y: 85 K: 23



a8dff9
C: 31 M: 0
Y: 0 K: 0







ADULT TICKET
MUSEUM OF MONOPOLY

20 . 04 . 21
GENERAL ADMISSION A\$ 23



www.museumofmonopoly.com.au

CHILD TICKET
MUSEUM OF MONOPOLY

20 . 04 . 21
CHILD TICKET



20 . 04 . 21
ADULT TICKET



